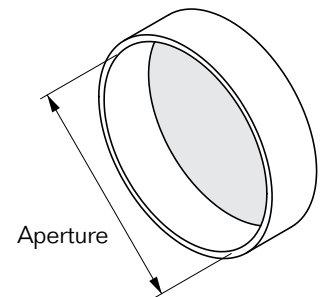
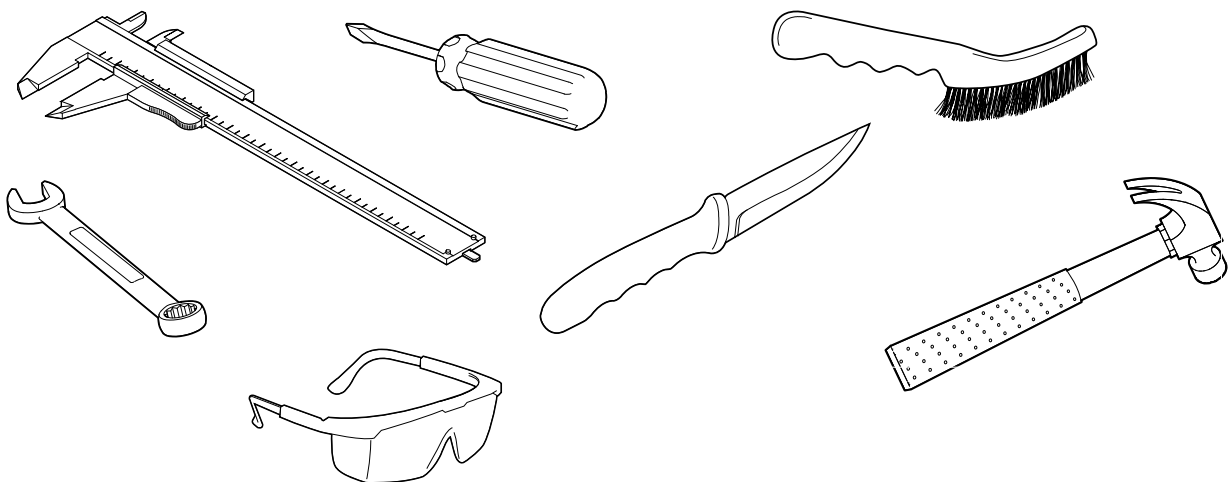


Installation instructions
Roxtec R UG™ seals

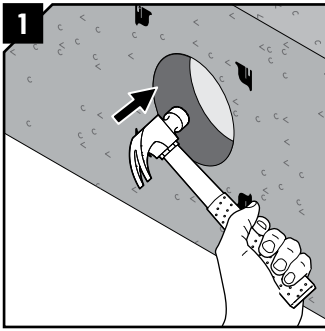
Type:	Aperture Ø (mm)	Clearance depth (mm)	Packing space (mm)
R 100 UG	100 - 102	80	60 x 60
R 150 UG	150 - 152	80	90 x 90
R 200 UG	200 - 202	80	120 x 120



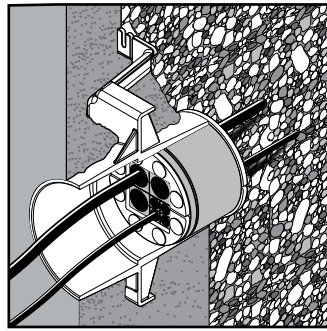
Optional tools



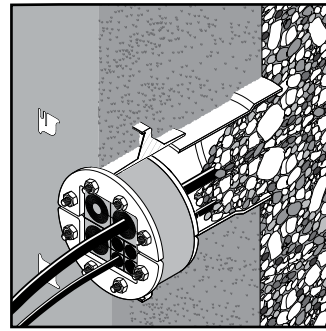
Installation in a Roxtec knock-out sleeve UG™



Remove the knock-out of the sleeve before inserting the seal.

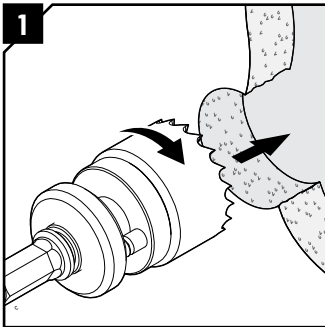


The seal can be installed from the outside of the structure.



The seal can also be installed from the inside of the structure.

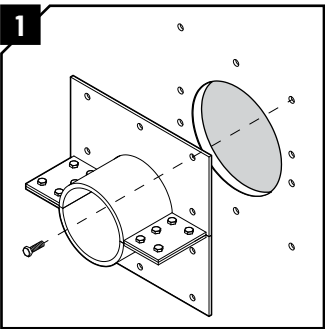
Installation in a core-drilled hole



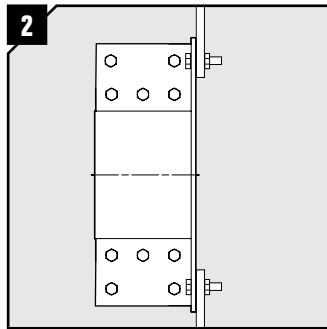
Use a hole saw with the appropriate diameter.

Installation in a bolted sleeve

For retrofit purposes an openable sleeve can be used.

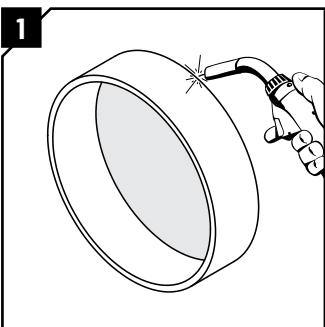


Use the flange as template for the drilling of the bolt holes.



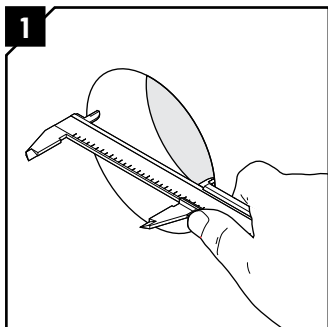
Attach the frame to the structure using suitable sealing method and suitable stainless fasteners.

Installation in a welded sleeve

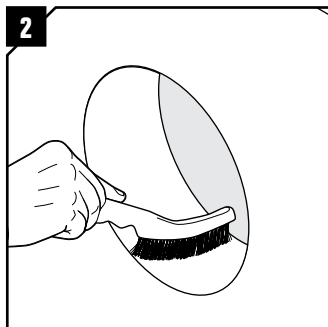


Weld the Roxtec sleeve to the cabinet/wall. Welding guidelines are available at www.roxtec.com.

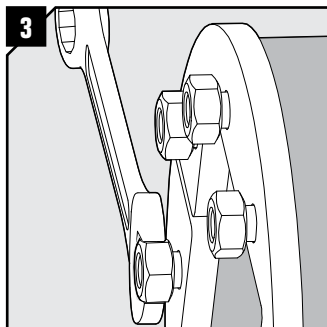
Installation



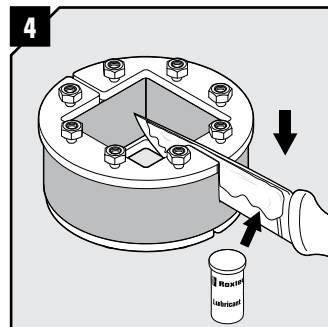
1 Measure the aperture according to the table on the first page.



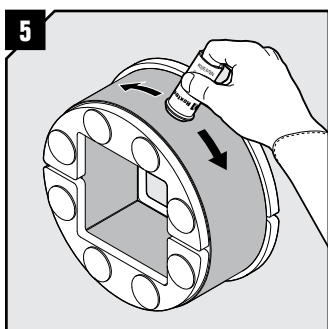
2 Remove any dirt from the sleeve/hole.



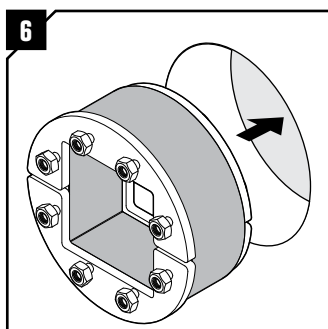
3 Loosen all the nuts.



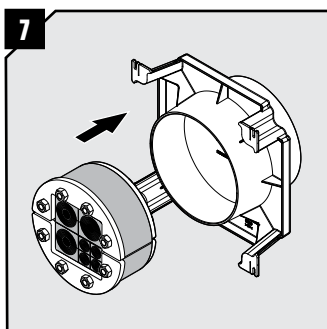
4 If pipes/cables are pre-routed, the frame can be cut open with a sharp lubricated tool.
Note: The cut must be smooth and without removing material.



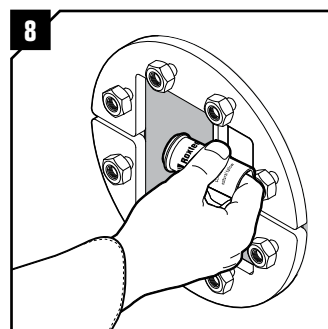
5 Lubricate the frame sparsely on the outside with Roxel Lubricant if needed.



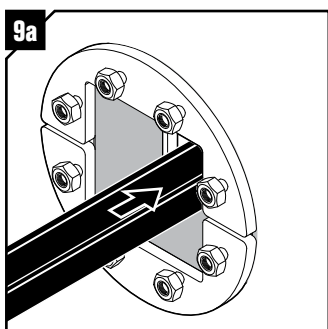
6 Insert the frame into the sleeve/hole.



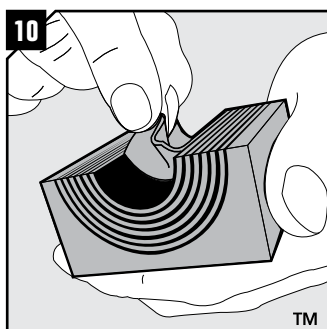
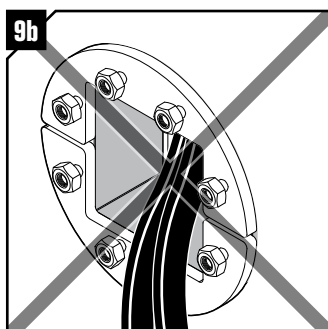
7 The seal must always be installed in the correct end of the knock-out sleeve.



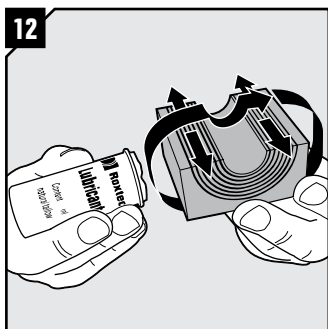
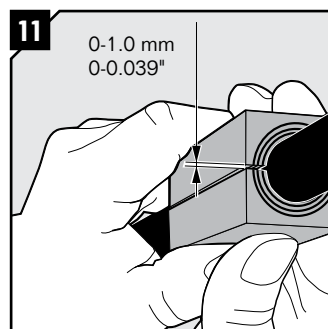
8 Lubricate the inside of the frame thoroughly, especially into the corners.



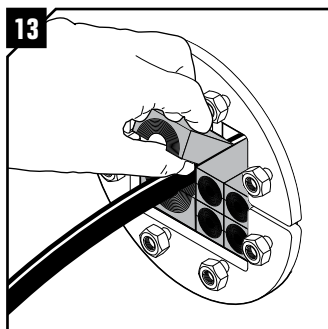
9a Pull the pipes/cables through. Cables shall go straight through the seal.



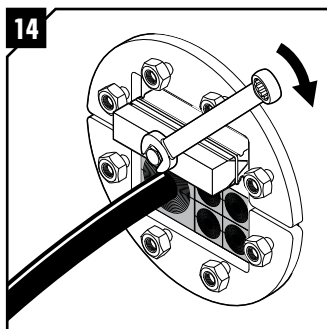
10 Adapt modules to cables/pipes by peeling off layers. Achieve a 0-1.0 mm gap between the two halves when held against the cable/pipe. The halves may not differ by more than one layer. The last layer must not be removed.



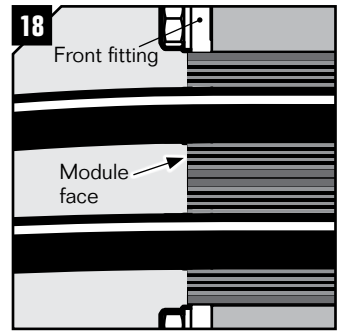
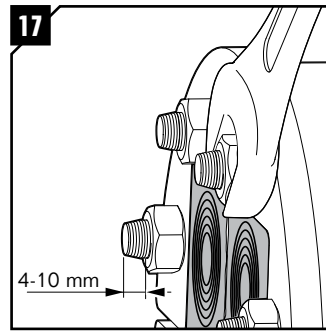
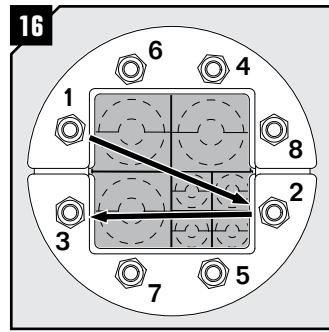
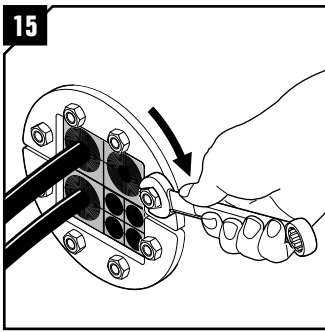
12 Lubricate all modules thoroughly, both the inside and the outside sealing surfaces.



13 Insert the modules and cables/pipes according to your installation plan (transit plan). Begin with the smallest modules.

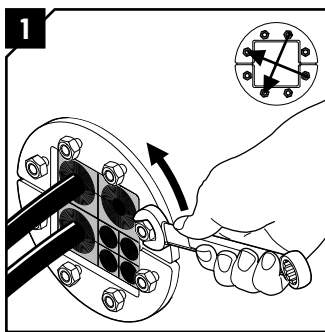


14 Use the Roxeltec pre-compression tool to make room for the final module row.

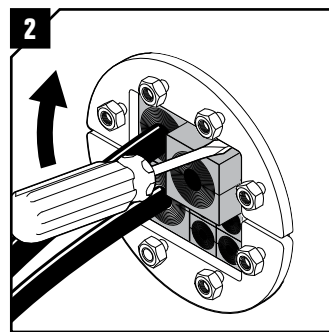


Tighten the nuts crosswise until 4-10 mm thread is visible or the module faces are flush with the front fittings of the R frame.

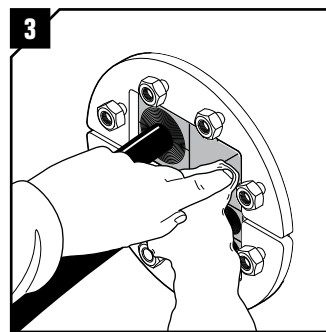
Disassembly and reinstallation



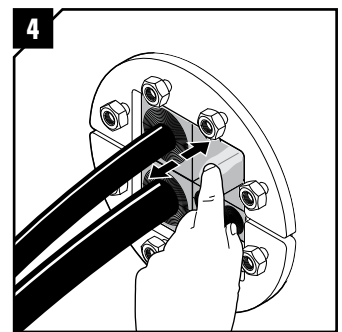
1 Untighten the nuts crosswise. Make sure the nuts are completely loose.



2 Remove the modules needed using a flat tool. Replace any damaged modules.



3 Make sure that the inside surfaces of the packing space are free from dirt or dust.



4 Lubricate the inside surfaces all around with Roxtec Lubricant, especially into the corners. Continue the reinstallation on page 3, step 10.

Note

- Wait 24 hours or longer after installation before exposing the cables/pipes to strain or pressure.
- Temperature range +4°C to +40°C.
- Cables shall go straight through the seal.
- Cable/pipe with a considerable weight needs to be supported to prevent damage or subsidence to the seal.
- To be used with: Roxtec RM UG™ modules.
- Do not peel off the last rubber layer of each module half.

DISCLAIMER

"The Roxtec cable entry sealing system ("the Roxtec system") is a modular-based system of sealing products consisting of different components. Each and every one of the components is necessary for the best performance of the Roxtec system. The Roxtec system has been certified to resist a number of different hazards. Any such certification, and the ability of the Roxtec system to resist such hazards, is dependent on all components that are installed as a part of the Roxtec system. Thus, the certification is not valid and does not apply unless all components installed as part of the Roxtec system are manufactured by or under license from Roxtec ("authorized manufacturer"). Roxtec gives no performance guarantee with respect to the Roxtec system, unless (i) all components installed as part of the Roxtec system are manufactured by an authorized manufacturer and (ii) the purchaser is in compliance with (a), and (b), below.

(a) During storage, the Roxtec system or part thereof, shall be kept indoors in its original packaging at room temperature.

(b) Installation shall be carried out in accordance with Roxtec installation instructions in effect from time to time.

The product information provided by Roxtec does not release the purchaser of the Roxtec system, or part thereof, from the obligation to independently determine the suitability of the products for the intended process, installation and/or use.

Roxtec gives no guarantee for the Roxtec system or any part thereof and assumes no liability for any loss or damage whatsoever, whether direct, indirect, consequential, loss of profit or otherwise, occurred or caused by the Roxtec systems or installations containing components not manufactured by an authorized manufacturer and/or occurred or caused by the use of the Roxtec system in a manner or for an application other than for which the Roxtec system was designed or intended.

Roxtec expressly excludes any implied warranties of merchantability and fitness for a particular purpose and all other express or implied representations and warranties provided by statute or common law. User determines suitability of the Roxtec system for intended use and assumes all risk and liability in connection therewith. In no event shall Roxtec be liable for indirect, consequential, punitive, special, exemplary or incidental damages or losses."



Roxtec International AB
 Box 540, 371 23 Karlskrona, SWEDEN
 PHONE +46 455 36 67 00, FAX +46 455 820 12
 EMAIL info@roxtec.com, www.roxtec.com