

## Safety information

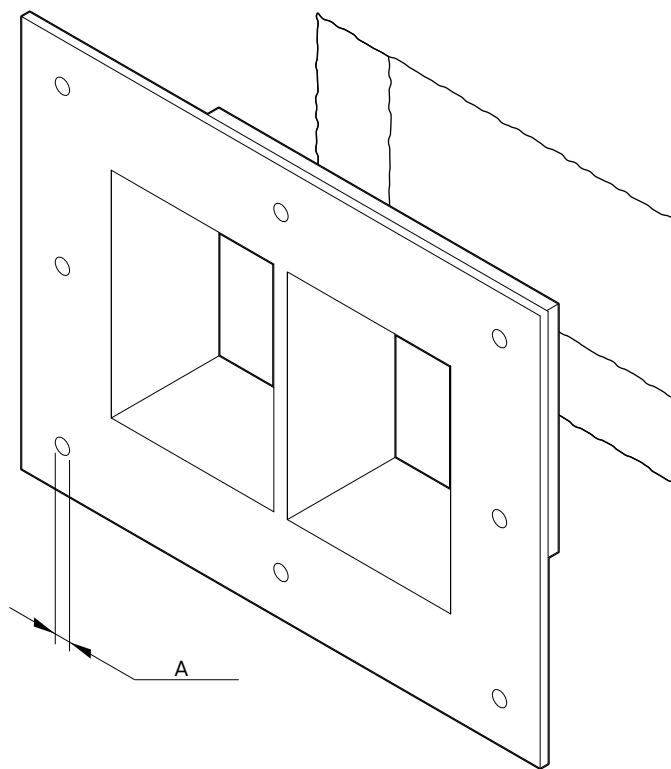
Roxtec recommends that all installations are performed without facility operation. Follow national regulations and installation codes. Any action affecting the routed service should be performed according to manufacturer recommendations.



## Installation instructions Roxtec GH frames

### Installation of bolted G series frames

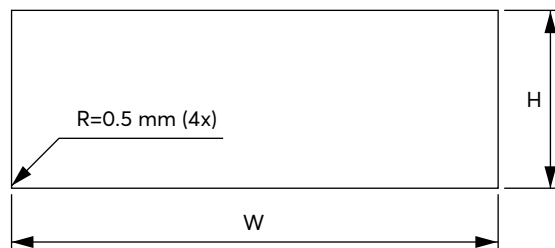
Additional sealing components are required for a complete solution. Follow the corresponding installation instructions.



A:  $\varnothing$  10.5 mm

## Aperture dimensions

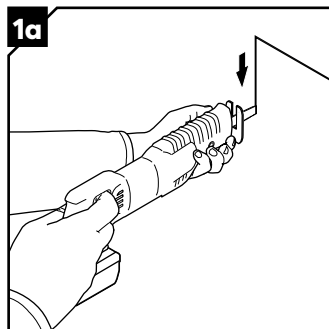
Dimensions below are in millimeters (mm) and valid for all bolted G series frames.



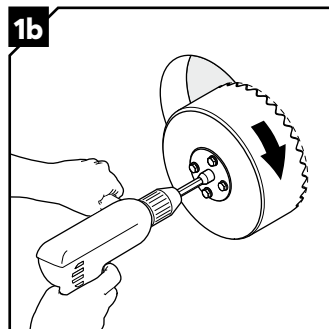
Frame	H = Height	W = Width									
		x1	x2	x3	x4	x5	x6	x7	x8	x9	x10
2	128										
2+2	241	148	278	409	539	670	800	931	1061	1192	1322
2+2+2	354										
4	187										
4+4	358	148	278	409	539	670	800	931	1061	1192	1322
4+4+4	530										
6	245										
6+6	475	148	278	409	539	670	800	931	1061	1192	1322
6+6+6	705										
8	305										
8+8	595	148	278	409	539	670	800	931	1061	1192	1322
8+8+8	885										

Height and width tolerance  $\pm 5$

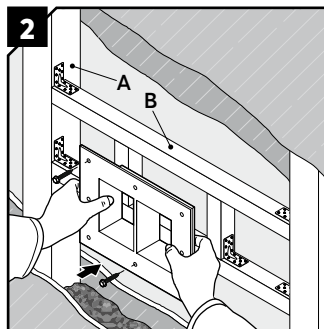
## Installation



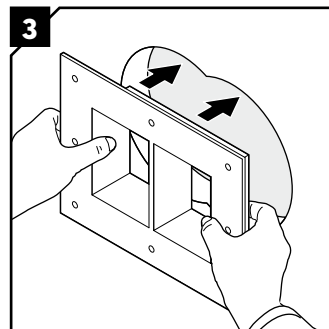
For load-bearing structure. Use a suitable tool to make the aperture in the wall. See table for aperture dimensions.



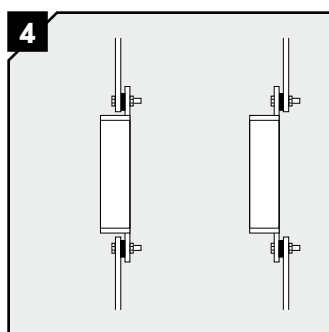
For load-bearing structure. Alternatively, use a hole saw for the aperture.



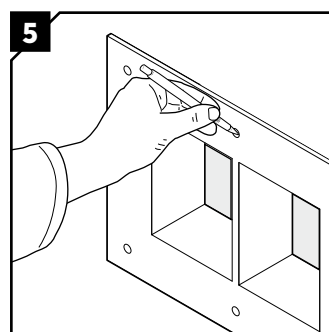
For non load bearing structure. Add additional aperture framing structure of steel or timber (B) to the existing structure (A) inside the wall. Attach the frame to the added structure with suitable fasteners.



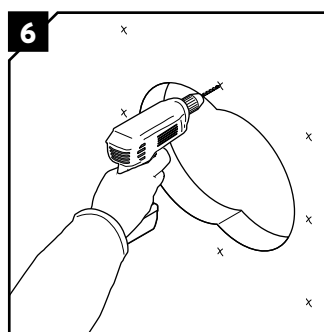
Insert the frame into the aperture.



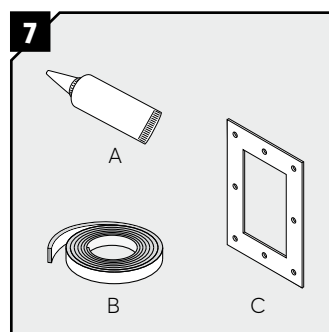
Alternative frame installation positions.



Center the frame in the aperture and use it as template for the flange hole pattern.

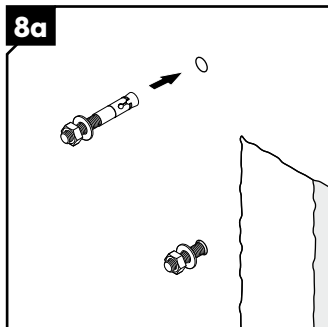


Remove the frame and drill the holes for the bolts.

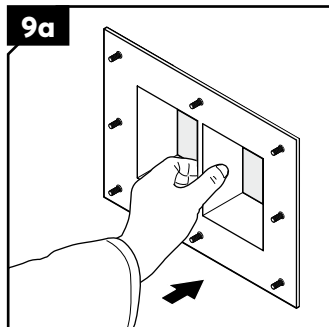


A: Sealant. B: Sealing strip. C: Gasket. Choose sealing method. To seal the frame against the structure, apply a gasket/sealant according to page 6-7.

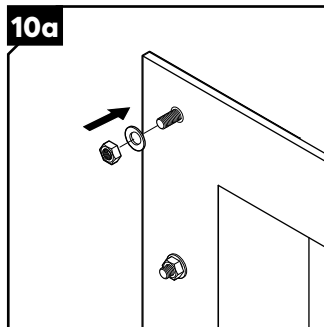
## Installation with expansion bolts



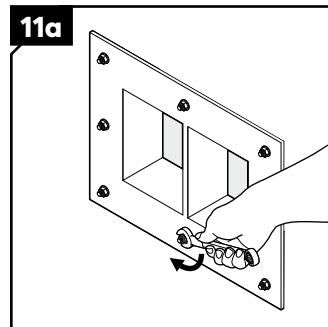
Insert the expansion bolts in the drilled holes.



Attach the frame to the structure.

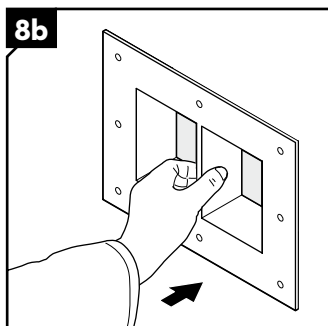


Attach washers and nuts to the expansion bolts. Nuts and washers are recommended to be of the same material type as the frame and in size M8.

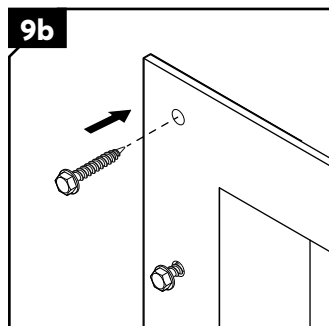


To complete the installation, tighten the nuts crosswise according to your selected fasteners.

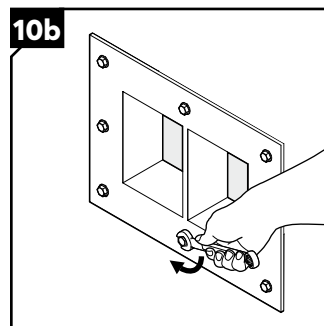
## Installation with wood screws



Attach the frame to the structure.

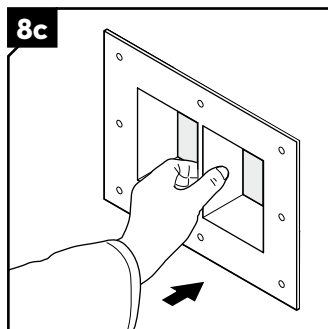


Attach the frame using wood screws.

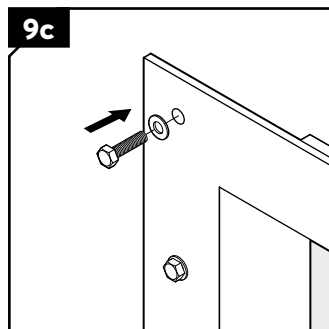


To complete the installation, tighten the nuts crosswise according to your selected fasteners.

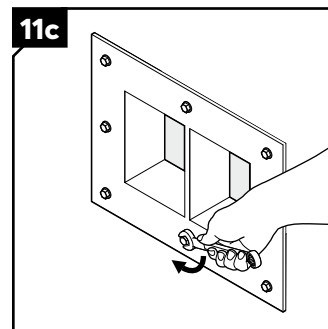
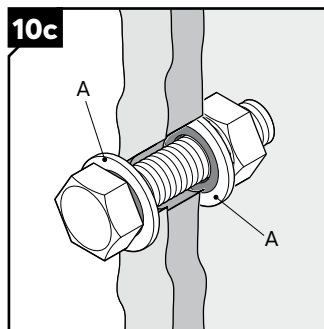
## Installation with bolts, nuts and washers



Attach the frame to the structure.

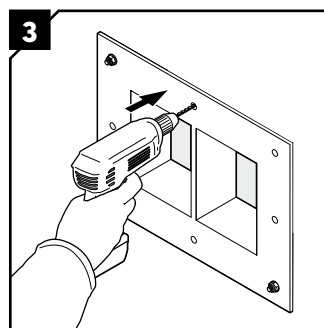
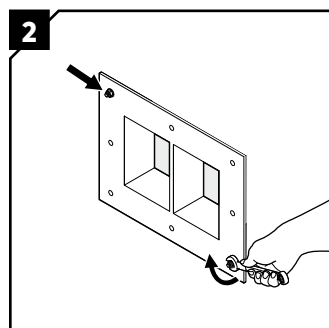
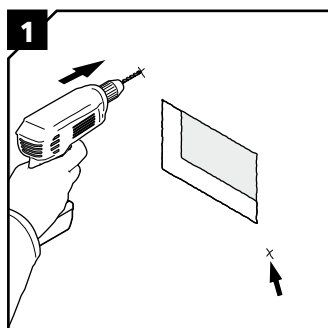


Attach the frame using bolts, nuts and washers. Through-holes must be sealed using sealant or sealing washers (A).



To complete the installation, tighten the nuts crosswise according to your selected fasteners.

## Installation of large frames

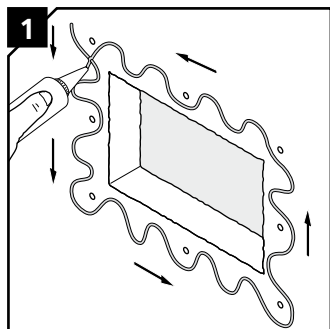


For large frames, simplify the installation by attaching two bolts first. Then drill the remaining holes with the frame in place.

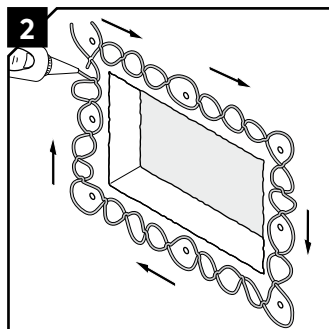
## Sealing methods

### A: Sealant

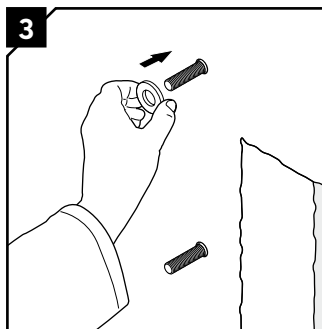
Suitable for rough surfaces, such as concrete.



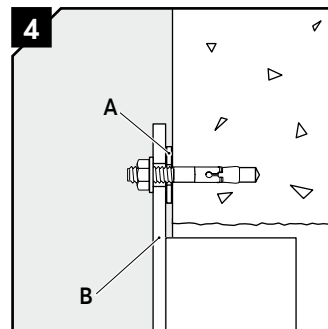
Apply sealant to the structure with a thickness of minimum 6 mm.



A second string of sealant isolates the holes.

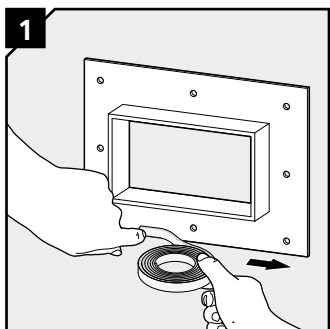


Attach 2 mm washers (A) or similar behind the flange (B) to ensure a 2 mm gap between the frame flange and the structure.

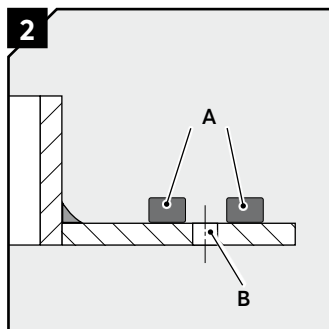


### B: Sealing strips

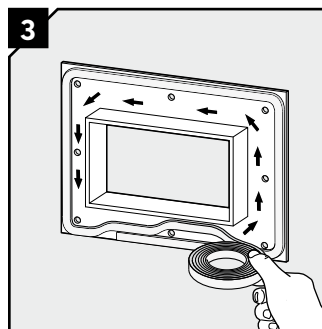
Suitable for flat surfaces, such as steel or boards.



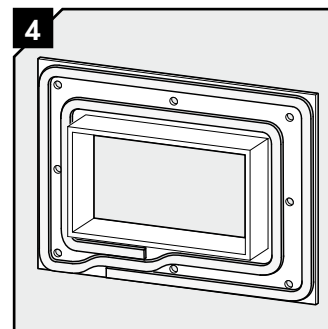
Attach the end of the sealing strip to the frame.



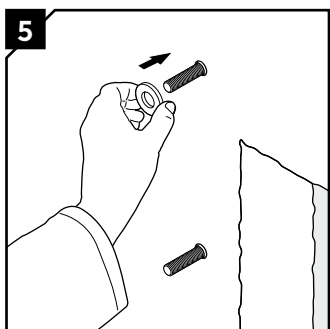
Make sure the sealing strip (A) is applied as close to the bolt holes (B) as possible.



Apply two rounds of sealing strip.



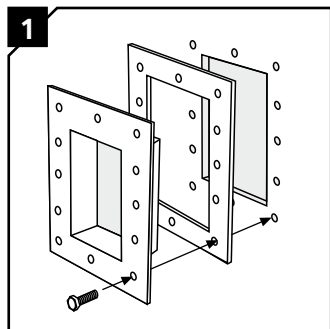
Cut the sealing strip so that it overlaps as shown in the picture. Make sure that the sealing strip parts are mounted tightly against each other in the overlap section.



Attach washers or similar behind the flange to ensure a 2 mm gap between the frame flange and the structure. Note: When using TSL 15x6 sealing strip, the washer is not needed.

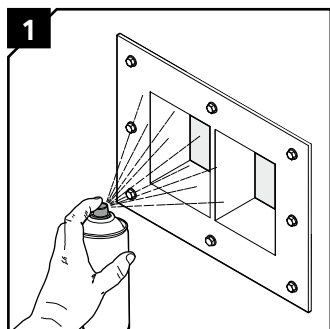
## C: Pre-punched gasket

Suitable for flat surfaces, such as steel.



Place the pre-punched gasket between the frame and the structure.

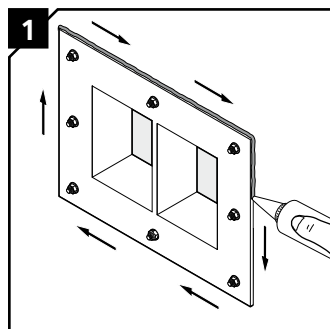
## Primed frames



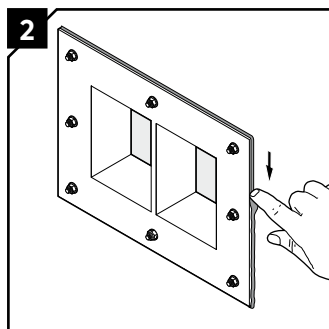
Primed frames will need additional coating.

## Optional

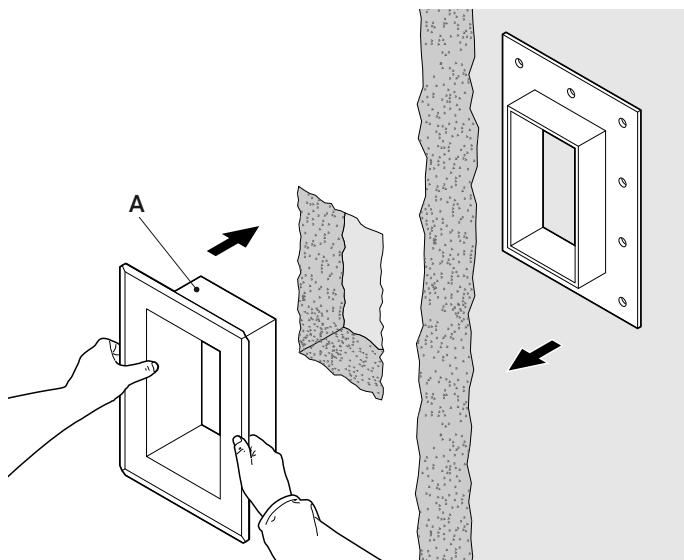
For increased resistance against crevice corrosion and frost wedging.



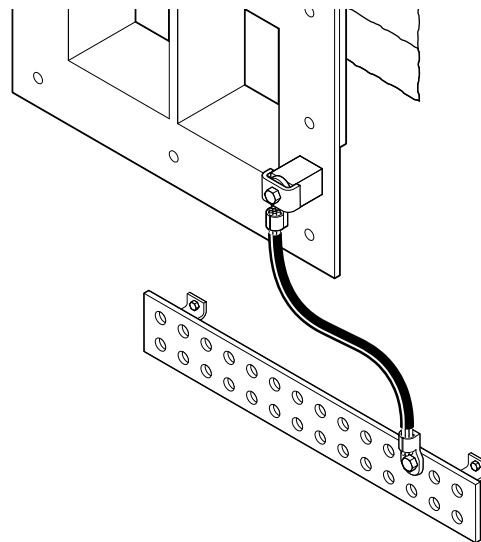
Apply a final string of sealant around the perimeter of the flange.



Smooth out the sealant so that it closes any gap completely all around. Consider the curing time of the sealant.



Whenever channelization is needed, a GE frame (A) can be used.



If the frame is equipped with an earthing terminal, it can be connected to an earth bar.

## Note

- When the frame is to be bolted in concrete, it is recommended to keep the aperture as small as possible to prevent cracks.
- Through-holes must be sealed using sealant or sealing washers.
- The structure and chosen sealing method have significant effect on the rating and type approval. Consult your local Roxtec representative.
- Systems using Roxtec sealing modules of ES type require conductive gaskets. Consult your local Roxtec representative.
- Use fasteners of type FZB or A4 in size M8.
- Approvals or certificates may include amendments or limitations related to this application.
- The latest version of this and related documents are found at [roxtec.com](http://roxtec.com).

## DISCLAIMER

"The Roxtec cable entry sealing system ("the Roxtec system") is a modular-based system of sealing products consisting of different components. Each and every one of the components is necessary for the best performance of the Roxtec system. The Roxtec system has been certified to resist a number of different hazards. Any such certification, and the ability of the Roxtec system to resist such hazards, is dependent on all components that are installed as a part of the Roxtec system. Thus, the certification is not valid and does not apply unless all components installed as part of the Roxtec system are manufactured by or under license from Roxtec ("authorized manufacturer"). Roxtec gives no performance guarantee with respect to the Roxtec system, unless (I) all components installed as part of the Roxtec system are manufactured by an authorized manufacturer and (II) the purchaser is in compliance with (a), and (b), below.

(a) During storage, the Roxtec system or part thereof, shall be kept indoors in its original packaging at room temperature.

(b) Installation shall be carried out in accordance with Roxtec installation instructions in effect from time to time.

The product information provided by Roxtec does not release the purchaser of the Roxtec system, or part thereof, from the obligation to independently determine the suitability of the products for the intended process, installation and/or use.

Roxtec gives no guarantee for the Roxtec system or any part thereof and assumes no liability for any loss or damage whatsoever, whether direct, indirect, consequential, loss of profit or otherwise, occurred or caused by the Roxtec systems or installations containing components not manufactured by an authorized manufacturer and/or occurred or caused by the use of the Roxtec system in a manner or for an application other than for which the Roxtec system was designed or intended.

Roxtec expressly excludes any implied warranties of merchantability and fitness for a particular purpose and all other express or implied representations and warranties provided by statute or common law. User determines suitability of the Roxtec system for intended use and assumes all risk and liability in connection therewith. In no event shall Roxtec be liable for indirect, consequential, punitive, special, exemplary or incidental damages or losses."



Roxtec International AB  
Box 540, 371 23 Karlskrona, SWEDEN  
PHONE +46 455 36 67 00, FAX +46 455 820 12  
EMAIL [info@roxtec.com](mailto:info@roxtec.com), [www.roxtec.com](http://www.roxtec.com)