

**Designed with an internal LED floodlight to illuminate the windsock and prevent glare. The explosion proof illuminated windsock provides wind-speed and direction indication to pilots during landing and take-off.**



### Key features

- Reliable wind direction and wind-speed indication for helicopter operations
- Low cost of ownership
- Low power consumption
- No dazzling of pilot because of internal sock illumination
- No corrosion due to stainless steel 316 body
- Suitable for Zone 1 and Zone 2 areas with gas explosion hazard
- Various operating voltages
- Fully integrated aeronautical obstruction light if required

### Standards/Certification

- Complies with CAA-UK CAP 437 8th edition; Standards for Offshore Helicopter Landing Areas, chapter 4, paragraph 4.5 - Illuminated windsock
- Complies with ICAO Annex 14, Volume II; International standards and recommended practices: Aerodromes, chapter 5.1.1 - Wind direction indicators for elevated Heliports & Helidecks
- Certified to ICAO Annex 14, volume I; Aerodrome design and operations, 7th Edition, 2016, chapter 6.2.1.2 - Type A and B low intensity obstruction light
- Certified to CAA-UK CAP 437 8th edition; Standards for Offshore Helicopter Landing Areas, chapter 4, paragraph 4.32 - Low intensity 10cd obstruction light
- Certified to CAA-UK CAP 168, Licensing of Aerodromes Feb 2014, chapter 4, table 6A.1 Group A. Low intensity 10cd obstruction light
- Cenelec EN 60079-0, EN 60079-1, EN 60079-7
- SIRA 15ATEX1257; ATEX II 2 G Ex db e IIB T5 Gb
- IEC 60079-0, IEC 60079-1, IEC 60079-7
- IECEx SIR 15.0093; II 2 G Ex db e IIB T5 Gb
- ABNT NBR IEC 60079-0, ABNT NBR IEC 60079-1 and ABNT NBR IEC 60079-7
- Inmetro NCC 17.0028

### Performance characteristics

- Internal windsock light colour: white
- Aeronautical obstruction light colour: red
- Sock type 1: Red/White/Red; 1200mm ; standard execution
- Sock type 2: Orange/White/Orange; 1200mm ; optional
- Sock type 3: Orange; 1200mm ; optional
- Sock type 4: Red/White/Red; 1800mm; optional
- Sock type 5: Orange/White/Orange; 1800mm; optional

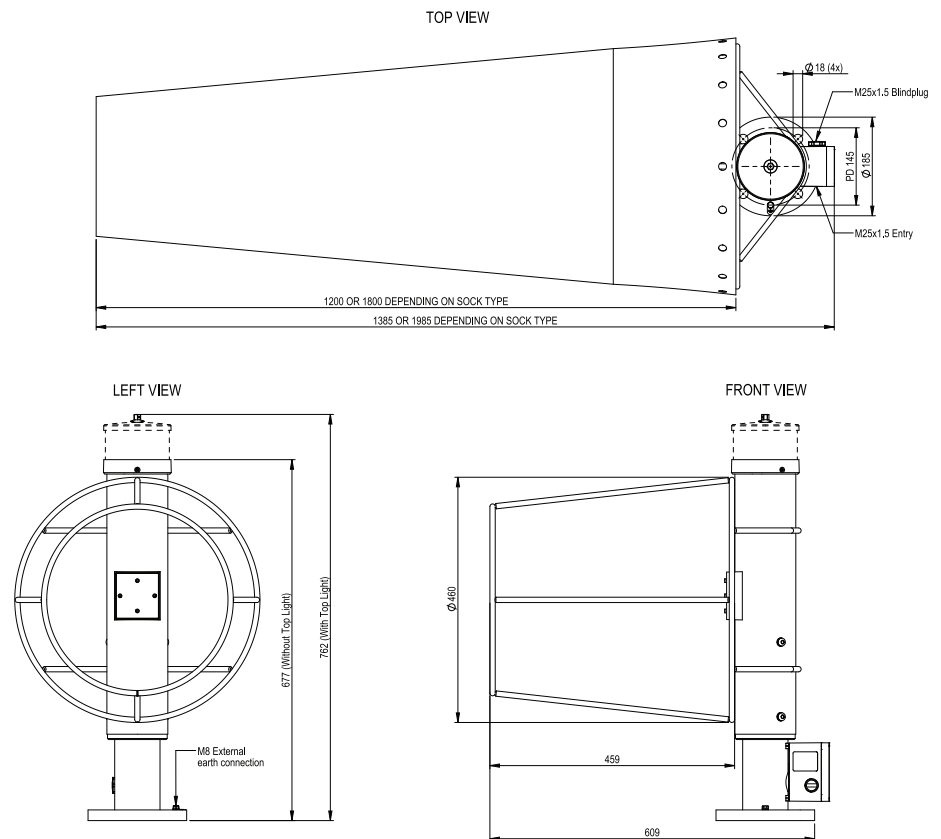
### Electrical characteristics

- Operating voltage: see table
- Power consumption: see table
- Connection details: max. 4mm<sup>2</sup>; two M25x1.5 entries
- Earth connection: internal max. 4mm<sup>2</sup> and external M8

### Physical characteristics

- Dimensions (L x W x H): 609 x 460 x 677mm
- Weight: 20kg
- Design degree of protection: IP66
- Operating temperature range: -40°C to +60°C

Type	Power consumption (W)	Frequency	Voltage (V)	Aeronautical obstruction light
HWC100EX-AC	8.5W / 9VA	50 / 60 Hz	110-254Vac	
HWC100EX-AC-R-10	14W / 15VA	50 / 60 Hz	110-254Vac	10cd
HWC100EX-AC-R-32	18W / 19VA	50 / 60 Hz	110-254Vac	32cd
HWC100EX-DC	7W		20-32Vdc	
HWC100EX-DC-R-10	12W		20-32Vdc	10cd
HWC100EX-DC-R-32	17W		20-32Vdc	32cd



Orga BV  
Strickledeweg 13  
3125 AT SCHIEDAM  
The Netherlands

P.O. Box 3046  
3101 EA SCHIEDAM  
The Netherlands

T +31 (0)10 208 5555  
F +31 (0)10 437 8445  
info@orga.nl  
www.orga.nl